



ASFP
www.asfp.org.uk

YELLOW BOOK

Fire protection for structural steel in buildings 4th Edition

**(Volume 2: Part 2:
Casings, Blankets and Circular Pre-formed Products)**

Amendments to Vol 2 Part 2: Section 10:2 Product Data Sheets

DATE	SECTION	AMENDMENT SUMMARY	SOURCE
27/06/07	10	List of Products amended	BP
13/07/07	ALL	Book divided into two volumes. Vol 1: Sections 1-8 & 10 and Vol 2: Section 9 Product Data Sheets	BP
20/11/07	ALL	Sections renumbered sequentially. 9 is now Bibliography and 10 the Product Data Sheets	BP
20/11/07	10	Product Sections renumbered and called Vol 2 Parts 1, 2, 3 and 4	BP
07/10/09	10.2	Repagination of section	BP
30/03/10	Cover	New Volume Covers	NR

SECTION 10:2

CASINGS / BLANKETS

List of Product Data Sheets

FIREMASTER 607 BLANKET

CIRCULAR PRE-FORMED PRODUCTS

List of Product Data Sheets

FIREPRO FIRE TUBE

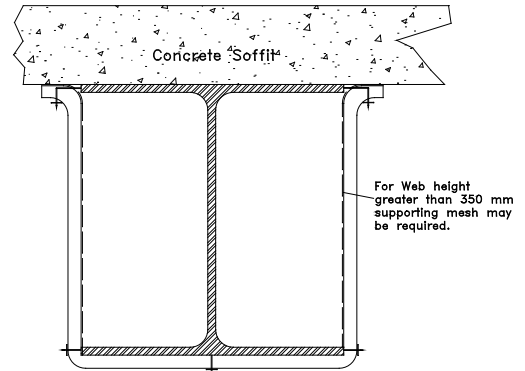
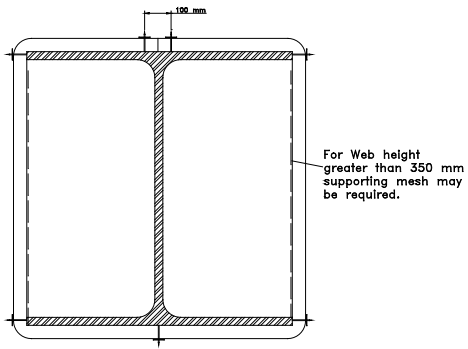
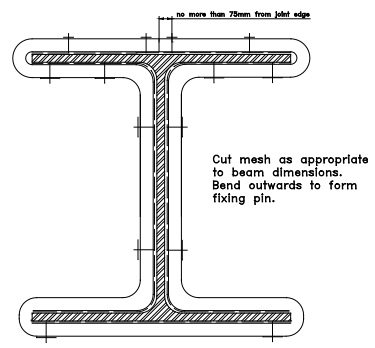
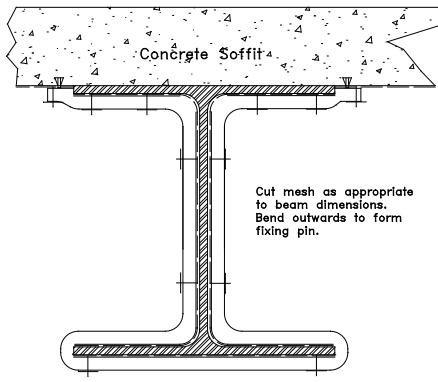
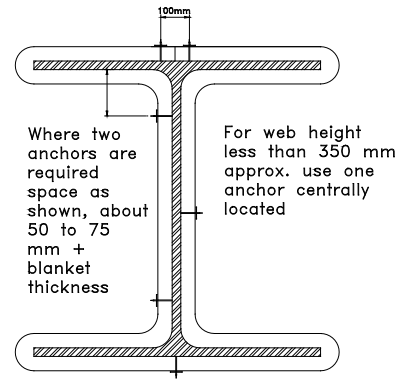
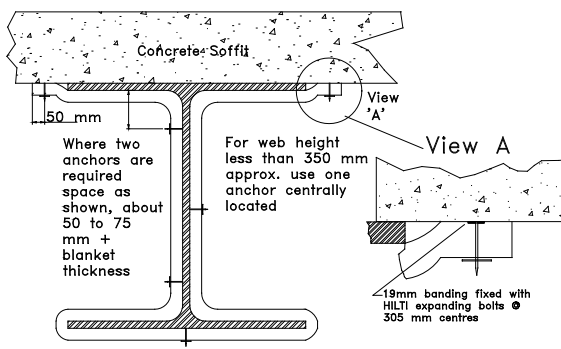
VICUTUBE

This volume should be read in conjunction with Volume 1, available to download from www.asfp.org.uk

FIREMASTER 607 BLANKET

Section factor H_p/A (m^{-1})	Fire resistance period (minutes) 500°C						Product thickness
	30	60	90	120	180	240	
260	106	54					12mm
	166			55			19mm
	233	82	74				25mm
	260	160	120	80	50		38mm
		264	168	97	69		50mm
		315	273	135	108		38 + 38mm

Note: all thicknesses up to 50mm may be applied in one single layer with compressed butt joints.
For thicknesses above 50mm, or if two layers are preferred, the thinner layer should be applied on outside.

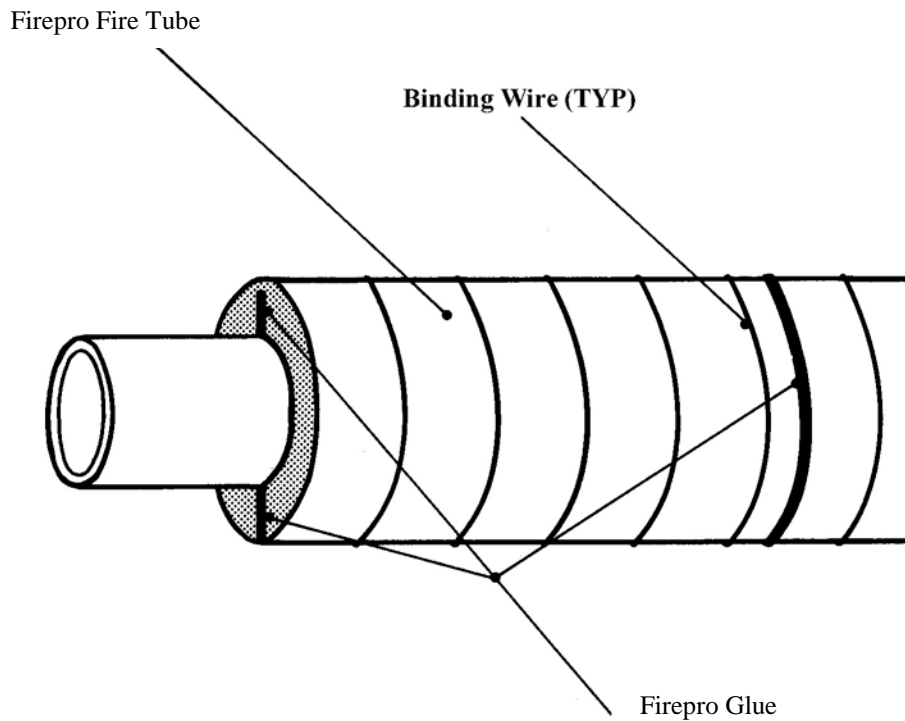


The data provided complies with the principles in Sections 3 and 4 of this Yellow Book

FIREPRO FIRE TUBE

	Critical temperature: 550°C						Tube wall thickness
	Fire resistance period (minutes)						
	30	60	90	120	180	240	
Section factor - Hp/A <small>(m⁻¹)</small>	260	260	110	65	-	-	25mm
			241	124	63	42	40mm
			260	178	85	55	50mm
				260	122	77	65mm
					152	93	75mm
					170	102	80mm
Tested and assessed to BS 476:Part 21							

This product is certified by a 3rd Party Certification body accredited to ISO Guide 65
 The data provided complies with the principles in Sections 3 and 4 of this Yellow Book



VICUTUBE

- 1. Product description**

Rigid, exfoliated vermiculite, silicate bonded, semi-circular pipe sections.
(Quality assurance to BS EN ISO 9001:2000)
- 2. Manufacturer**

PROMAT UK LTD
The Sterling Centre, Eastern Road, Bracknell, Berkshire RG12 2TD
Technical: T: 01344 381400 F: 01344 381401 E: technicaluk@promat.co.uk
Marketing: T: 01344 381350 F: 01344 381401 E: marketinguk@promat.co.uk
Sales: T: 01344 381381 F: 01344 381380 E: salesuk@promat.co.uk
www.promat.co.uk
- 3. Availability**

Supply through nominated distributors, many offering specialist cutting facilities: list of distributors and recommended contractors available from manufacturer
- 4. Protection technique**

Profile
- 5. Application technique**

The semi-circular sections are held in position using Vicubond WR cement, that fill the joints.
Temporary wires or tapes can be used to provide support while the cement sets.
- 6. Steel preparation requirements**

None
- 7. Additional mechanical fixing**

None
- 8. Nominal density**

430 kg/m³
- 9. Thickness range**

30mm, 40mm, 50mm
- 10. Fire resistance range**

a) Up to 2 hours
A/V 45 – 335m⁻¹ (circular hollow sections up to 273mm diameter). The data may also be applied to rectangular hollow sections
- 11. Constraints for fire resistance**

a) minimum thickness – 30mm
b) maximum thickness – 50mm
- 12. Appearance**

Oatmeal in colour, even surface. Decorative finishes, plaster or sand/cement render may be applied
- 13. On site use**

For internal and semi exposed applications
- 14. Durability**

Resistant to short term moisture exposure, vermin, mould growth, minor impact and abrasion
- 15. Performance in other BS fire tests**

Non-combustible in accordance with BS476-4, so complies with Class 0 and is a Material of Limited Combustibility as defined in the Building Regulations 1991. For Information in relation to EN fire tests, consult Promat Technical Services for advice
- 16. Other applications**

a) High temperature thermal insulation
b) Encasement of boiler flues and PVC pipes

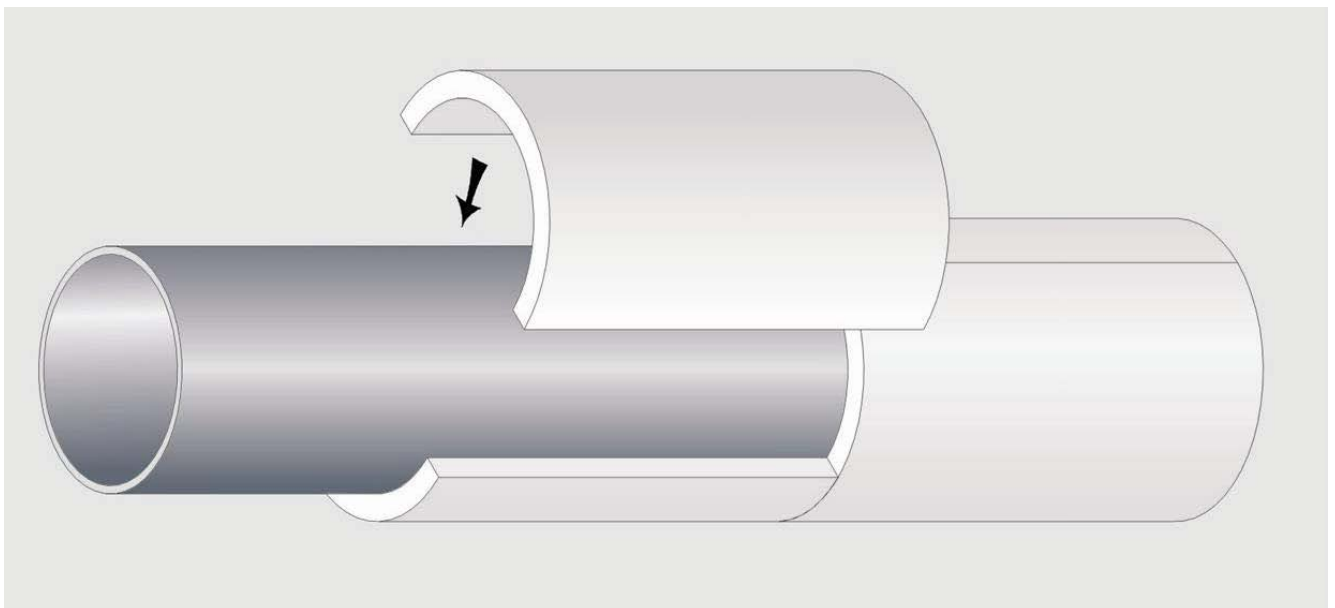
VICUTUBE

Critical Temperature 550°C						
Outside diameter of CHS (mm)	Steel Wall Thickness (mm)	Section Factor (m ⁻¹)	Thickness in mm of casing to provide fire resistance of (minutes)			
			30 min	60 min	90 min	120 min
48	3.2 / 4.0	335 / 275	30	40	50	-
	5.0	330 / 270	30	30	40	50
60	3.2 / 4.0	325 / 270	30	40	50	-
	5.0	220	30	30	40	50
76	3.2 / 4.0	325 / 265	30	40	50	-
	5.0	215	30	30	40	50
89	3.2 / 4.0	325 / 260	30	40	50	-
	5.0	210	30	30	40	50
114	3.6	285	30	40	50	-
	5.0 / 6.3	210 / 170	30	30	40	50
140	5.0 / 6.3	205 / 165	30	30	40	50
	8.0 / 10.0	135 / 110	30	30	30	40
168	5.0 / 6.3	205 / 165	30	30	40	50
	8.0 / 10.0	130 / 105	30	30	30	40
219	5.0 / 6.3	205 / 165	30	30	40	50
	8.0 to 20.0	130 to 55	30	30	30	40
245	6.3	165	30	30	40	50
	8.0 to 20.0	130 to 55	30	30	30	40
273	6.3	160	30	30	40	50
	8.0 to 20.0	130 to 45	30	30	30	40

Notes:

For CHS wind bracings use the above thicknesses to a maximum of 30, 40 and 50mm for 60,90 and 120min fire resistance respectively

Other sizes may be available on request. Not all wall thicknesses given are readily available. The correct thickness should be confirmed by Promat before specifying



The data provided complies with the principles in Sections 3 and 4 of this Yellow Book

INTENTIONAL BLANK PAGE